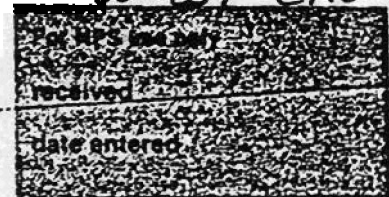


United States Department of the Interior  
National Park Service

National Register of Historic Places  
Inventory—Nomination Form

EXP: 12/31/84  
60-161-1110-61



Continuation sheet 272 Item number 1,2,4,6, & 10 Page 1

INDIVIDUAL DATA SHEET

General Description

Code: PU-132 Congressional District: Second  
Name: Farrell House Current Owner: Fred M. Oswald  
Address: 2115 Louisiana and Sarah Spencer  
Little Rock, Arkansas Address: 2115 Louisiana  
County: Pulaski Little Rock, Arkansas 72206

Architectural Information

Architectural Firm: Charles L. Thompson  
Date of Construction: 1914 Stylistic Influence: Craftsman  
Original Use: Residence Present Use: Residence

Geographical Information

UTM Reference: 15 566430/3842920 Acreage: Less than one  
Verbal Boundary Description: DuVall's Addition  
Block 428, South 1/4 of  
Lot 4 and north 1/4 of 5

Condition

Excellent  Deteriorated  Unaltered  
 Good  Ruins  Altered  
 Fair  Unexposed

United States Department of the Interior  
National Park Service

## National Register of Historic Places Inventory—Nomination Form

For NPS use only
received
date entered

Continuation sheet

274

Item number 7 &amp; 8

Page 2

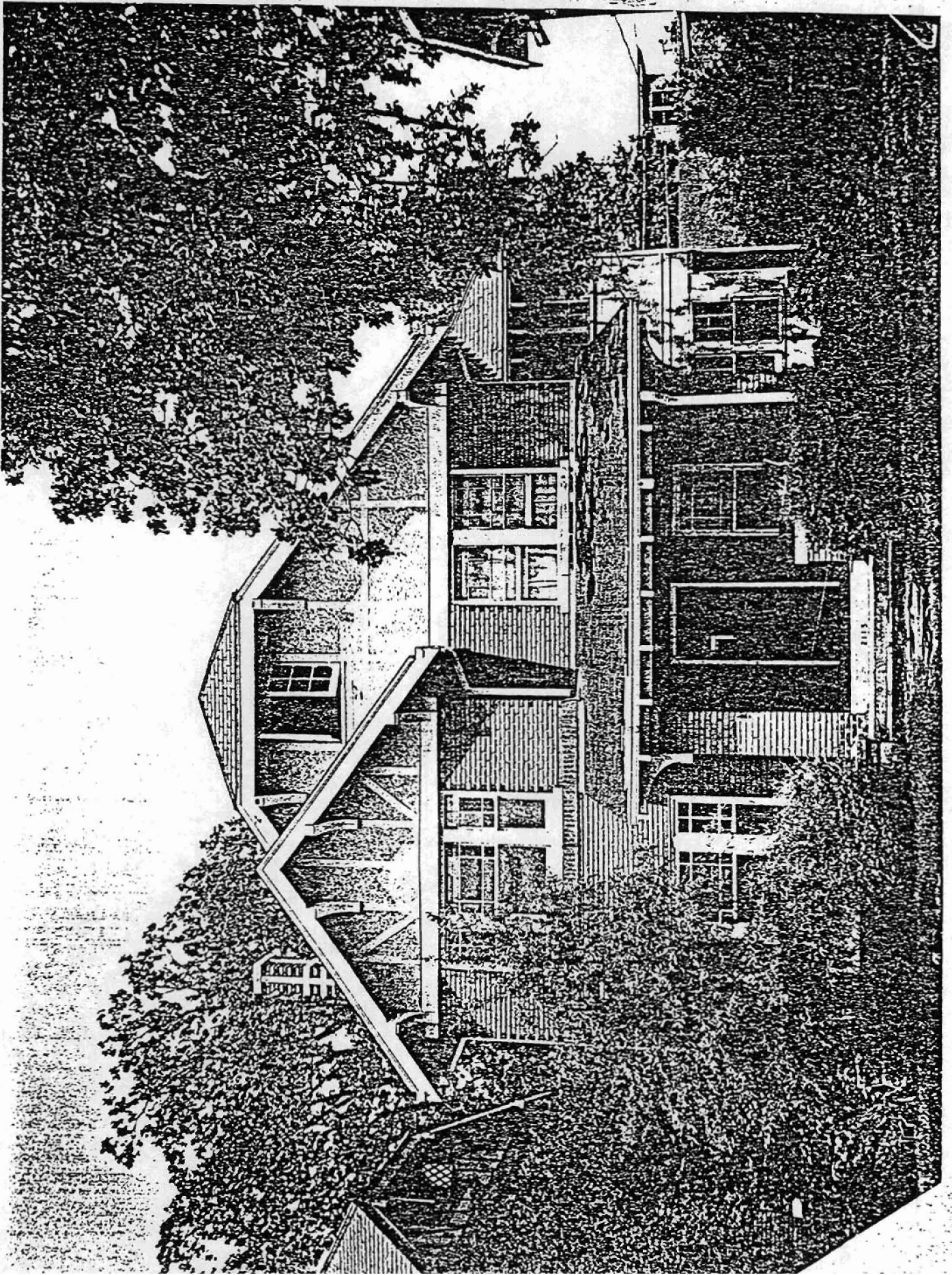
Code: PU-132 (2115 Louisiana, Little Rock, AR)

### Physical Description

Sited on a small lot in a residential section near the Governor's Mansion in Little Rock is this two-story house, designed by the Charles Thompson firm in 1914. Resembling an enlarged bungalow, two front gables with half-timber effects and large brackets dominate the front elevation. The gables project from the slate gable end roof which caps the house; a small wing faced with stucco, containing a second story porch with casement windows is located on the south elevation. The ever-present front porch fills the space between the main block of the house and the projecting cross gable section. More details reminiscent of the popular bungalow are the central clipped gable, the exposed rafters of the front porch, the windows with plate glass below and muntins with intersecting borders in the upper sashes.

### Statement of Significance

In 1914 Charles L. Thompson designed a group of rent houses for Mr. R. E. Farrell in the 2100 block of Louisiana. These three houses are solid and sturdy Craftsman designs which are all basically the same scale. An innovative use of a variety of materials and earthy textures gives each of these houses a distinctive character not usually associated with rental property. The Farrell House at 2115 Louisiana has two front gables with half-timber effects and large brackets dominating the front (west) elevation. A slate gable roof covers the main body of the house. A porch with shed roof is located on the south end of the front elevation. The firm's creative energy is clearly in evidence in the three Farrell houses; each is an individual entity sharing common characteristics with the other two.



STRUCTURES IN ARKANSAS REPRESENTED BY THE  
CHARLES L. THOMPSON DESIGN COLLECTION-  
A THEMATIC GROUP

Little Rock, Pulaski Co., Arkansas  
Quadrangle Name: Little Rock, Ark.  
Scale: 1:24,000

UTM Reference:	PU-132	15	566430/3842920
	PU-136	15	566200/3843450
	PU-138	15	566190/3843400

