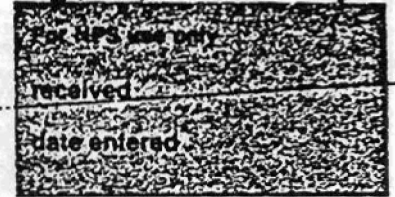


United States Department of the Interior
National Park Service

National Register of Historic Places
Inventory—Nomination Form

EXP 12/31/84
60-148-110-61



Continuation sheet 266 Item number 1,2,4,6, & 10 Page 1

INDIVIDUAL DATA SHEET

General Description

Code: PU-129 Congressional District: Second
Name: Farrell House Current Owner: Esther T. Peal
Address: 2121 Louisiana Little Rock, Arkansas
County: Pulaski Address: 2121 Louisiana Little Rock, Arkansas 72206

Architectural Information

Architectural Firm: Charles L. Thompson
Date of Construction: 1914 Stylistic Influence: Craftsman
Original Use: Residence Present Use: Residence

Geographical Information

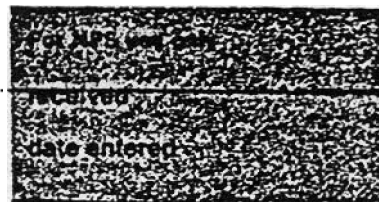
UTM Reference: 15 S66410/3842890 Acreage: Less than one
Verbal Boundary Description: DuVall's Addition
Block 428, Lot 6

Condition

Excellent Deteriorated Unaltered
 Good Ruins Altered
 Fair Unexposed

United States Department of the Interior
National Park Service

**National Register of Historic Places
Inventory—Nomination Form**



Continuation sheet

267

Item number 7 & 8

Page 2

Code: PU-129

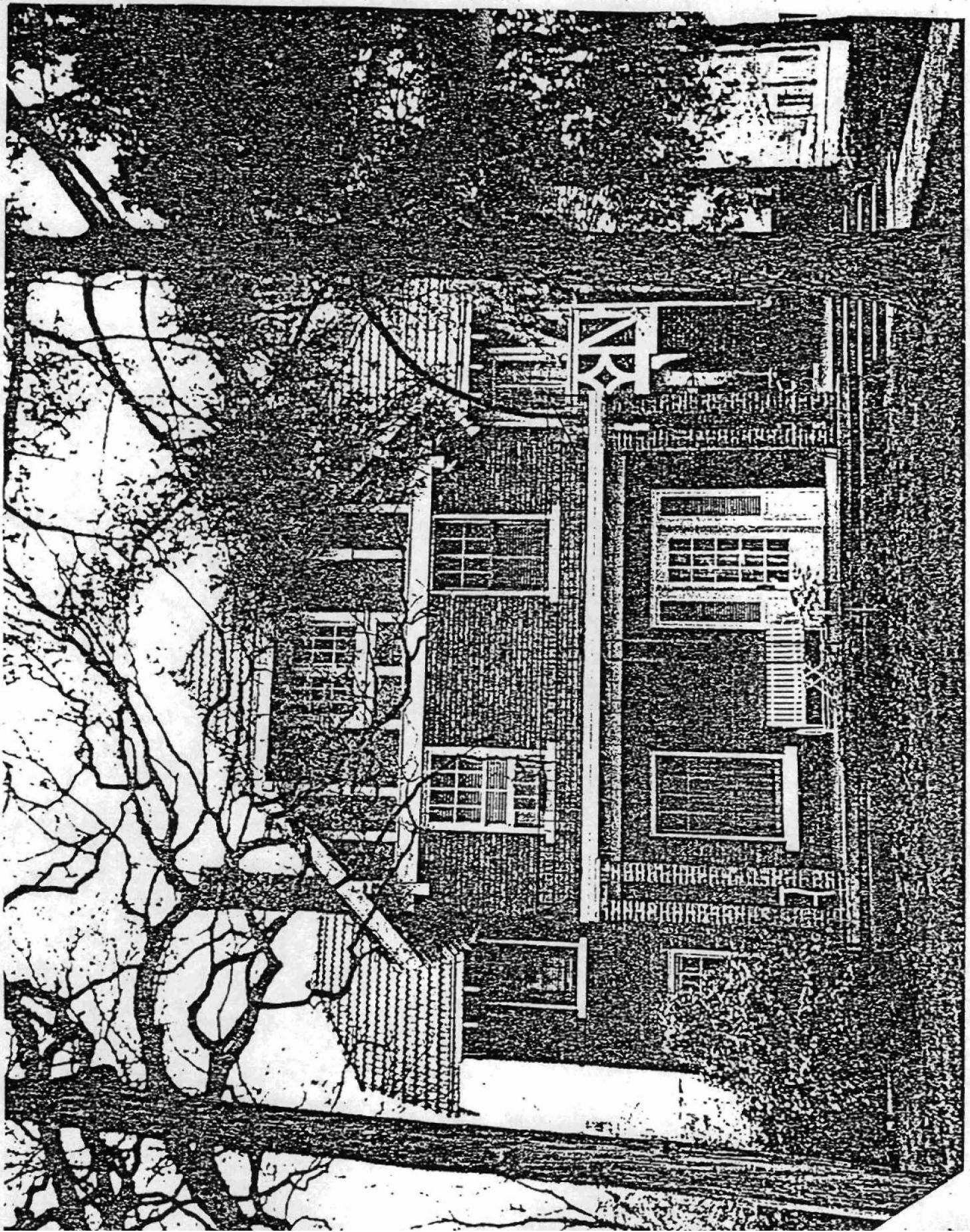
(2121 Louisiana, Little Rock, AR)

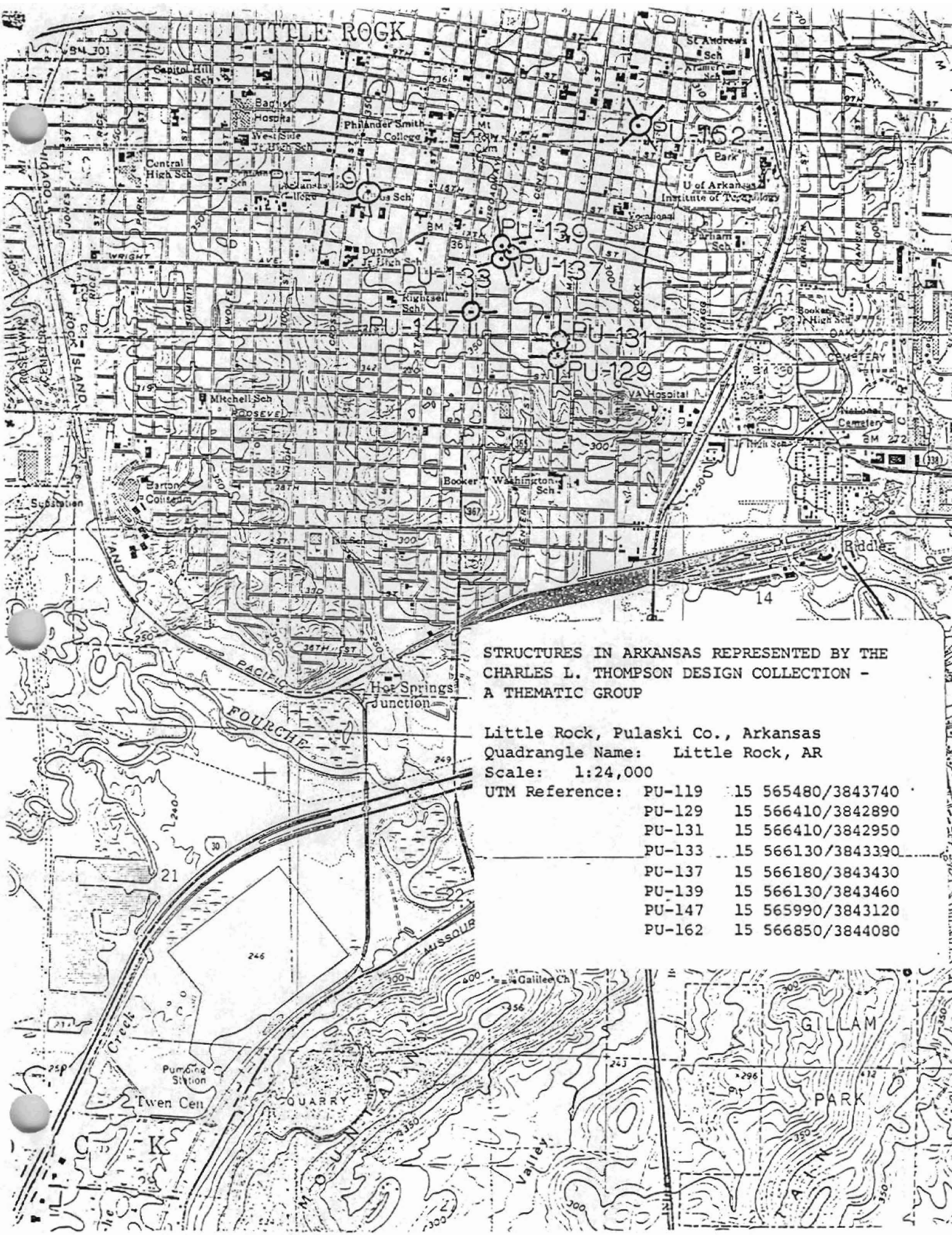
Physical Description

Dark brown brick faces this two-story house with terra-cotta gable end roof, designed in 1914 by the Charles Thompson firm. The residence is situated on a corner site in a neighborhood near the Governor's Mansion in Little Rock. As in many Craftsman influenced designs, a front cross gable section with clipped gable and half-timber effects in the upper part, projects from the main block. The south side elevation is characterized by an open porch at ground level and enclosed porch with casement windows on second story. This porch is faced with pseudo half-timbering. The front porch, now altered somewhat, has a simple shed roof. The front door has a multi-paned window. The sash windows have eight over-one-lights.

Statement of Significance

In 1914 Charles L. Thompson designed a group of rent houses for Mr. R. E. Farrell in the 2100 block of Louisiana. These three houses are solid and sturdy Craftsman designs which are all basically the same scale. An innovative use of a variety of materials and earthy textures gives each of these houses a distinctive character not usually associated with rental property. The Farrell House at 2121 Louisiana is two-stories and constructed of dark brown brick. The house is capped by a terra-cotta gable roof. Located on a corner lot, this house features a front cross gable section with clipped gable and half-timber effects in the upper portion. A simple shed roof porch is located on the front (west) elevation. The south elevation features an open porch on the ground floor and a second story enclosed porch. The firm's creative energy is clearly evidenced in the three Farrell Houses; each is an individual entity sharing common characteristics with the other two.





STRUCTURES IN ARKANSAS REPRESENTED BY THE
 CHARLES L. THOMPSON DESIGN COLLECTION -
 A THEMATIC GROUP

Little Rock, Pulaski Co., Arkansas
 Quadrangle Name: Little Rock, AR
 Scale: 1:24,000

UTM Reference:

PU-119	15 565480/3843740
PU-129	15 566410/3842890
PU-131	15 566410/3842950
PU-133	15 566130/3843390
PU-137	15 566180/3843430
PU-139	15 566130/3843460
PU-147	15 565990/3843120
PU-162	15 566850/3844080