

National Register of Historic Places
Inventory—Nomination Form

For RPS use only
received _____
date entered _____

Continuation sheet

246

Item number 1, 2, 4, 6, & 10

Page 1

INDIVIDUAL DATA SHEET

General Description

Code: PU-111

Congressional District: Second

Name: Johnson House
Address: 514 E. 8th
Little Rock, Arkansas
County: Pulaski

Current Owner: Little Rock Restorations, Lt.
c/o Thomas E. Wilkes
Address: 511 E. 7th St.
Little Rock, Arkansas 72202

Architectural Information

Architectural Firm: Charles L. Thompson

Date of Construction: ca. 1900

Stylistic Influence: Colonial Revival

Original Use: Residence

Present Use: Multi-family residence

* 514, 516, 518 E. 8th are a three-structure apartment com-
joined by a common courtyard and known as Cromwell Court

Geographical Information

UTM Reference: 15 567170/3844330

Acreage: Less than one

Verbal Boundary Description: Johnson's Addition
Block 4, Lot 9, 10, 11

Condition

Excellent
 Good
 Fair

Deteriorated
 Ruins
 Unexposed

Unaltered
 Altered

National Register of Historic Places
Inventory—Nomination Form

For NPS use only
received
date entered

Continuation sheet 247

Item number 7 & 8

Page 2

Code: PU-111 (514 E. 8th, Little Rock, AR)

Physical Description

One of a group of three similar rental houses on small lots along East 8th Street, this two-story Foursquare house, faced with weatherboards, and capped with hipped roof with flared eaves, was designed by Charles Thompson around 1900. The house rests on a high brick foundation, adding to the vertical orientation. In this popular house type decoration was focused at the dormer and on the full-length front porches.

The porch is supported by unfluted Ionic columns with brackets under the eaves of the shed roofed porch. The central dormer features a pediment roof with louvred vents framed by pilasters. Downstairs sash windows have one-over-one lights; upstairs windows have six-over-one lights.

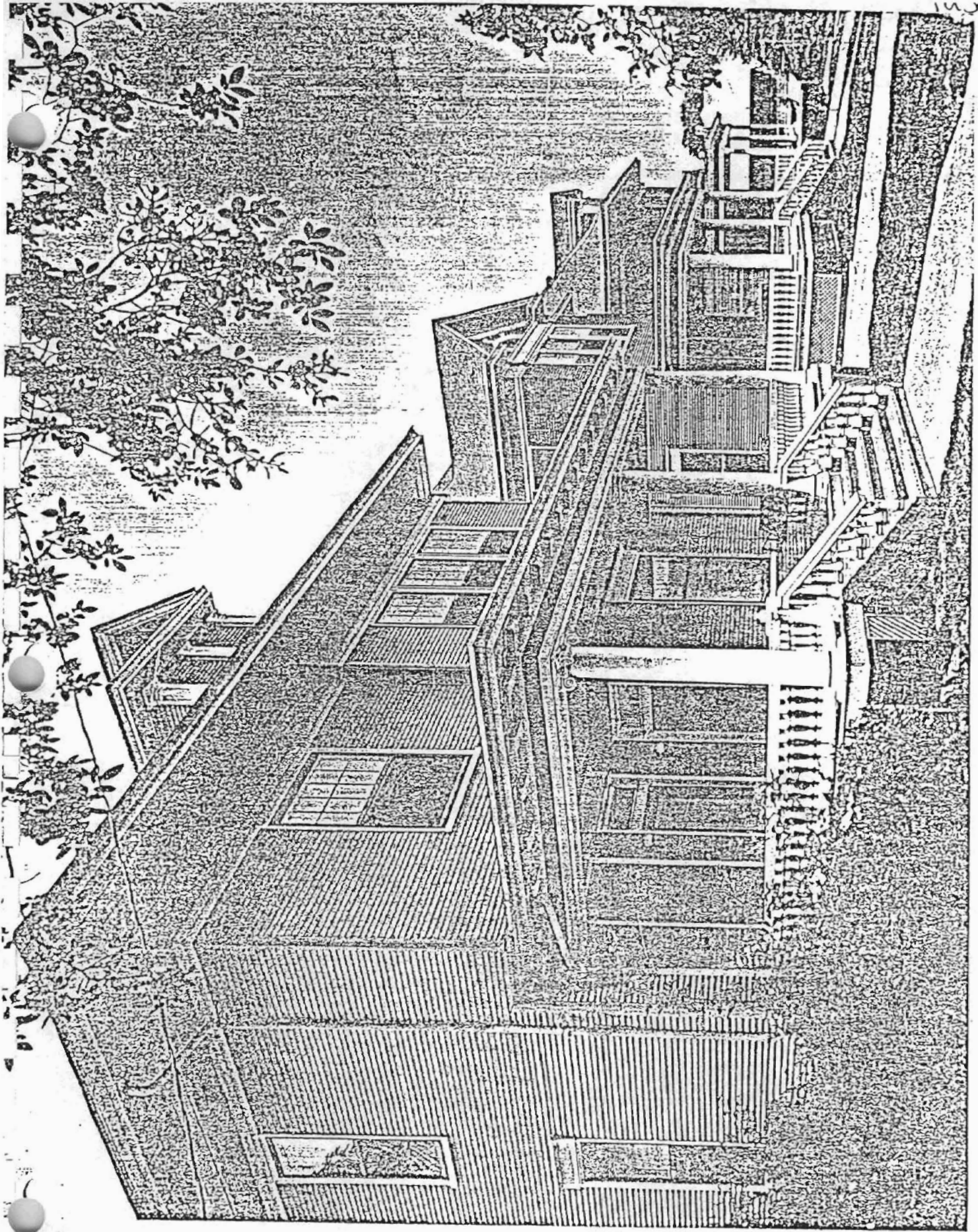
Statement of Significance

In about 1910, Charles L. Thompson designed three rent houses located at 514, 516 and 518 East Eight Street in Little Rock. Located in the MacArthur Park Historic District, these houses have recently been restored and are part of a complex known as Cromwell Court. Each house is a variation of the American Foursquare design and an integral part of a group which represents one of the most cohesive historic environments in Little Rock. It is the only such Foursquare group designed by Thompson.

Following the Foursquare concept each house is two-story, square, and capped with a hipped roof. All houses contain a two-story projecting bay and a one-story full length porch with similar Tuscan-like columns and balustrade on the front facade. The windows and doors of each house are identical in size and surrounded treatment. All three houses are sheathed with weatherboards and set on a brick foundation.

Even though the houses are almost identical in massing, each house contains its own particular set of classical decorative elements which distinguish it from the others. Each house is an individualized part of the whole.







Structures in Arkansas Represented in the Charles L. Thompson Design Collection

Little Rock, Pulaski Co., Arkansas
 Quadrangle Name: Little Rock, Ark.
 Scale: 1:24,000

UTM Reference:	PU	15	566080/3843450
	PU-091	15	566080/3843450
	PU-092	15	566040/3842840
	PU-093	15	566100/3842770
	PU-094	15	566030/3842630
	PU-095	15	566030/3842570
	PU-096	15	566020/3842460
	PU-101	15	566490/3842960
	PU-103	15	566920/3844180
	PU-104	15	566920/3844140
	PU-105	15	566820/3843500
	PU-111	15	567170/3844330
	PU-112	15	567210/3844330
	PU-113	15	567240/3844330
	PU-114	15	567080/3844510
	PU-118	15	564520/3843910
	PU-120	15	564610/3843060
	PU-121	15	566980/3844050
	PU-130	15	566380/3842960

