

United States Department of the Interior  
National Park Service

# National Register of Historic Places Registration Form

This form is for use in nominating or requesting determinations for individual properties and districts. See instructions in National Register Bulletin, *How to Complete the National Register of Historic Places Registration Form*. If any item does not apply to the property being documented, enter "N/A" for "not applicable." For functions, architectural classification, materials, and areas of significance, enter only categories and subcategories from the instructions.

## 1. Name of Property

Historic name: Arkansas Teachers Association Headquarters Building and Professional Services Building

Other names/site number: ATA Building and Doctors Professional Building

Name of related multiple property listing:

\_\_\_\_\_  
(Enter "N/A" if property is not part of a multiple property listing)

## 2. Location

Street & number: 1304 & 1306 Wright Avenue

City or town: Little Rock State: AR County: Pulaski

Not For Publication:  Vicinity:

## 3. State/Federal Agency Certification

As the designated authority under the National Historic Preservation Act, as amended,

I hereby certify that this X nomination \_\_\_ request for determination of eligibility meets the documentation standards for registering properties in the National Register of Historic Places and meets the procedural and professional requirements set forth in 36 CFR Part 60.

In my opinion, the property X meets \_\_\_ does not meet the National Register Criteria. I recommend that this property be considered significant at the following level(s) of significance:

\_\_\_ national X statewide \_\_\_ local

Applicable National Register Criteria:

X A \_\_\_ B \_\_\_ C \_\_\_ D

<p>_____ Signature of certifying official/Title:</p> <p>_____ State or Federal agency/bureau or Tribal Government</p>	<p>_____ Date</p>
---	-----------------------

AR Teachers Association Headquarters Building  
and Professional Services Building

Pulaski, Arkansas

Name of Property

County and State

In my opinion, the property  X  meets \_\_\_ does not meet the National Register criteria.

\_\_\_\_\_  
**Signature of commenting official:**

\_\_\_\_\_  
**Date**

\_\_\_\_\_  
**Title :**

\_\_\_\_\_  
**State or Federal agency/bureau  
or Tribal Government**

---

#### 4. National Park Service Certification

I hereby certify that this property is:

- \_\_\_ entered in the National Register
- \_\_\_ determined eligible for the National Register
- \_\_\_ determined not eligible for the National Register
- \_\_\_ removed from the National Register
- \_\_\_ other (explain:) \_\_\_\_\_

\_\_\_\_\_  
Signature of the Keeper

\_\_\_\_\_  
Date of Action

---

#### 5. Classification

##### Ownership of Property

(Check as many boxes as apply.)

- Private:
- Public – Local
- Public – State
- Public – Federal

##### Category of Property

(Check only **one** box.)

- Building(s)
- District
-

AR Teachers Association Headquarters Building  
and Professional Services Building

Pulaski, Arkansas

Name of Property

County and State

Site

Structure

Object

**Number of Resources within Property**

(Do not include previously listed resources in the count)

Contributing	Noncontributing	
<u>2</u>	_____	buildings
_____	_____	sites
_____	_____	structures
_____	_____	objects
<u>2</u>	_____	Total

Number of contributing resources previously listed in the National Register \_\_\_\_\_

**6. Function or Use**

**Historic Functions**

(Enter categories from instructions.)

SOCIAL: Civic  
COMMERCE/TRADE: Business  
COMMERCE/TRADE: Organizational  
HEALTH CARE: Clinic  
HEALTH CARE: Medical Business/Office

**Current Functions**

(Enter categories from instructions.)

COMMERCE/TRADE: Business  
VACANT/NOT IN USE  
\_\_\_\_\_  
\_\_\_\_\_  
\_\_\_\_\_  
\_\_\_\_\_

AR Teachers Association Headquarters Building  
and Professional Services Building  
Name of Property

Pulaski, Arkansas  
County and State

---

## 7. Description

### Architectural Classification

(Enter categories from instructions.)

MODERN MOVEMENT: International Style

---

---

---

---

---

---

**Materials:** (enter categories from instructions.)

Principal exterior materials of the property: BRICK, METAL: Steel, Aluminum,  
CONCRETE, GLASS

### Narrative Description

(Describe the historic and current physical appearance and condition of the property. Describe contributing and noncontributing resources if applicable. Begin with a **summary paragraph** that briefly describes the general characteristics of the property, such as its location, type, style, method of construction, setting, size, and significant features. Indicate whether the property has historic integrity.)

---

### Summary Paragraph

The Arkansas Teachers Association Headquarters Building and the Professional Services Building are located along the northern side of Wright Avenue, between Pulaski Street and Dr. Martin Luther King Drive. The Arkansas Teachers Association Headquarters Building and the Professional Services Building were both designed by the architectural firm of George Henry Tschiemer & Associates of Pine Bluff, Arkansas, in the early 1960s. The two lots along Wright Avenue were originally purchased from the Little Rock School District in early 1961 and the design of the two buildings followed in 1961 and 1962. Both buildings were constructed by the Smith Brothers General Contractors of North Little Rock, Arkansas, and completed by 1965. Both structures were designed in the Modern style, with Miesian influences.

AR Teachers Association Headquarters Building  
and Professional Services Building  
Name of Property

Pulaski, Arkansas  
County and State

---

## **Narrative Description**

The Arkansas Teachers Association Headquarters Building and the Professional Services Building are located along the northern side of Wright Avenue, between Pulaski Street and Dr. Martin Luther King Drive. The Arkansas Teachers Association Headquarters Building and the Professional Services Building were both designed by the architectural firm of George Henry Tschiemer & Associates of Pine Bluff, Arkansas, in the early 1960s. The two lots along Wright Avenue were originally purchased from the Little Rock School District in early 1961 and the design of the two buildings followed in 1961 and 1962. Both buildings were constructed by the Smith Brothers General Contractors of North Little Rock, Arkansas, and completed by 1965. Both structures were designed in the Modern style, with Miesian influences.

Most of the lot has been paved to provide parking for the two buildings. The southern edge of the lot, facing onto Wright Avenue, includes small areas of grass and sidewalks that lead from the main sidewalk to the each building. A driveway extends from Wright Avenue, between the two buildings, to the parking lot at the rear of the property. A secondary entry/exit driveway for the parking lot is located along West 18<sup>th</sup> Street, adjacent to the historic St. Peter's Rock Baptist Church building (NR listed 1.20.2005).

### **Arkansas Teachers Association Headquarters Building (1306 Wright Avenue)**

The building is a one story red-brick clad building with a poured-concrete foundation and topped by a flat roof. The roof is slightly angled downward to the rear (west) to shed water along the rear façade through a series of gutters and downspouts. The building now includes three commercial units with independent storefront facades; all of which are fronted by a walkway protected by projecting shed-roof canopy. A metal plaque on the building indicates the completion date of the building as 1965 and records the architect as George H. Tschiemer & Associates and the contractors as Smith Brothers.

### **South Façade**

The south façade includes two vertical, metal-framed, window system bays with inset red panels above and below a large single-pane window and a lower small, horizontal hopper window. These bays are surrounded by three bays of the common-bond brick façade. The roof line is delineated by a metal band, forming a simple cornice. The south façade includes a modern, internally lighted sign at the center of the façade, in-between the two vertical window bays.

AR Teachers Association Headquarters Building  
and Professional Services Building  
Name of Property

Pulaski, Arkansas  
County and State

### **East Façade**

The east façade includes a slightly extended section at the southern end of the façade. This extended section included three vertical window bays, as seen on the south façade, spaced evenly apart. The inset northern section of this façade is shaded by a metal shed roof structure, supported by five square metal columns. Under this roof structure there are three separate store fronts, composed of five bays of large, stationary windows with white inset panels above and below, all set in metal frames. The two northern store fronts include a single standard glass and metal door, topped by a small stationary transom window in the southern bay. The southernmost store front includes an additional vertical window bay and two glass and metal door bays.

### **North Façade**

The north façade is completely clad in brick. There are no window openings.

### **West (Rear) Façade**

The rear of this building faces west and is protected by a chain link fence that extends to a secondary fence along the western property line. The rear façade includes several small, horizontal, rectangular, one-over-one metal-framed windows and standard metal access doors. Each of the four single doors and one pair of double doors are protected by metal awnings that are cantilevered out of the brick façade. A central section of the rear façade extends slightly to the west, echoing the extended bay of the eastern façade, with a small bay that is not extended at the southern edge of the façade.

### **Professional Services Building (1304 Wright Avenue)**

The building is a one story red-brick clad building with a poured-concrete foundation and topped by a flat roof. The roof is slightly angled downward to the rear (west) to shed water along the rear façade through a series of gutters and downspouts. This building is larger than the Arkansas Teachers Association Headquarters Building to the west, both in depth and length. The building is composed of two main masses, the recessed mass to the south, which was originally the retail pharmacy space and the larger main mass of the building which included the main offices and clinics to the north. The southern pharmacy section is slightly taller than the rest of the building.

AR Teachers Association Headquarters Building  
and Professional Services Building  
Name of Property

Pulaski, Arkansas  
County and State

### **North Façade**

The north façade is completely clad in brick. There are no window openings.

### **West Façade**

The west façade of the southern retail pharmacy space is recessed in comparison to the northern section of the building. The southern portion of the façade includes a store front system with eight bays, with a set of double glass and metal frame doors at each end. The double doors are topped by a large horizontal, stationary transom. The entire store front system is protected by a flat metal roof supported by four square metal columns. The walkway roof is positioned lower than the main roof. The walkway roof wraps around the corner of the southern section of the building. An independent wall of screen blocks creates a small recessed exterior entry space for the corner unit of the main section of the building. This space is also a transition space from the front retail space to the original medical office spaces to the north. This entry space includes two window and inset panel store front bays and a central single metal and glass door.

The southern section of the building includes two large store front systems. The bays of this store front system echo the bays of the store fronts in the Arkansas Teachers Association Headquarters Building across the central drive. However, the bays in this building include a smaller central stationary window with a taller colored inset panel below and a short inset panel above, basically reversing the ratio of glass to panel in the other building. The southern store front, from the south corner includes nine window and panel bays, a single door, and then nine more window and panel bays. The second store front included, from the south, four window bays, a set of double doors with a wide transom above, and then four and one-half bays. The entire façade is fronted by the continuation of the covered walkway, supported by seven square columns.

### **North Façade**

The north façade includes four adjacent, rectangular one-over-one, metal framed, hopper windows high along the center of the façade. A single door with a metal awning above is located at the western side of this façade. A deteriorated wooden fence extends from this façade, creating a small outdoor storage area.

AR Teachers Association Headquarters Building  
and Professional Services Building  
Name of Property

Pulaski, Arkansas  
County and State

### **East (Rear) Façade**

The roof extends slightly over the east façade, providing slight shading to the rear of the building. There are equally-spaced sets of three, adjacent, one-over-one, metal-framed hopper windows along this façade. These windows include a slightly extended brick sill. A single metal access door is also located along this façade. The rear of the building is located very close to the eastern property line. The adjacent property has a ground level higher than this property, and the eastern property line includes a retaining wall and several areas of vegetation.

### **Interiors**

The interior of both buildings continue to echo their original layouts, with interior office spaces and larger commercial spaces now used by various businesses.

### **Integrity**

The ATA Headquarters Building has only had small, mostly cosmetic changes since its construction in the early 1960s. A new roof membrane was installed in 2001 and new lighting was installed in 2008. The building includes all of its original windows and store fronts. The metal, shed roof on the east side of the building may be a replacement of an early, less angled shed roof; however, this section has had a covered walkway since its construction. The Professional Services Building has also had only minor changes since its construction. The roof membrane was replaced in 2015 and new lighting and an aluminum canopy was installed over the northern door in 2008.

AR Teachers Association Headquarters Building  
and Professional Services Building  
Name of Property

Pulaski, Arkansas  
County and State

---

## 8. Statement of Significance

### Applicable National Register Criteria

(Mark "x" in one or more boxes for the criteria qualifying the property for National Register listing.)

- A. Property is associated with events that have made a significant contribution to the broad patterns of our history.
- B. Property is associated with the lives of persons significant in our past.
- C. Property embodies the distinctive characteristics of a type, period, or method of construction or represents the work of a master, or possesses high artistic values, or represents a significant and distinguishable entity whose components lack individual distinction.
- D. Property has yielded, or is likely to yield, information important in prehistory or history.

### Criteria Considerations

(Mark "x" in all the boxes that apply.)

- A. Owned by a religious institution or used for religious purposes
- B. Removed from its original location
- C. A birthplace or grave
- D. A cemetery
- E. A reconstructed building, object, or structure
- F. A commemorative property
- G. Less than 50 years old or achieving significance within the past 50 years

AR Teachers Association Headquarters Building  
and Professional Services Building  
Name of Property

Pulaski, Arkansas  
County and State

**Areas of Significance**

(Enter categories from instructions.)

EDUCATION  
ETHNIC HERITAGE: BLACK  
SOCIAL HISTORY

\_\_\_\_\_  
\_\_\_\_\_  
\_\_\_\_\_

**Period of Significance**

1961-1970  
\_\_\_\_\_  
\_\_\_\_\_

**Significant Dates**

April 11, 1965  
\_\_\_\_\_  
\_\_\_\_\_

**Significant Person**

(Complete only if Criterion B is marked above.)

\_\_\_\_\_  
\_\_\_\_\_  
\_\_\_\_\_

**Cultural Affiliation**

\_\_\_\_\_  
\_\_\_\_\_  
\_\_\_\_\_

**Architect/Builder**

Architect: George H. Tschiemer  
Builder: Smith Brothers General Contractors (John W. and Joseph T. Smith)  
\_\_\_\_\_

AR Teachers Association Headquarters Building  
and Professional Services Building  
Name of Property

Pulaski, Arkansas  
County and State

**Statement of Significance Summary Paragraph** (Provide a summary paragraph that includes level of significance, applicable criteria, justification for the period of significance, and any applicable criteria considerations.)

The Arkansas Teachers Association (ATA) Headquarters Building and the Professional Services Building are being nominated to the National Register of Historic Places under **Criterion A**, with **state wide significance**, for their association with the social and education related history of the Civil-rights movement in Little Rock and the State of Arkansas during the 1960s, specifically in relation to the efforts of the Council on Community Affairs (COCA) and the Arkansas Teachers Association (ATA) to end segregation and racial discrimination in various public and private spaces in Little Rock and school districts across the State of Arkansas.

**Narrative Statement of Significance** (Provide at least **one** paragraph for each area of significance.)

The Arkansas Teachers Association (ATA) Headquarters Building and the Professional Services Building are being nominated to the National Register of Historic Places under **Criterion A**, with **state wide significance**, for their association with the social and education related history of the Civil-rights movement in Little Rock and the State of Arkansas during the 1960s, specifically in relation to the efforts of the Council on Community Affairs (COCA) and the Arkansas Teachers Association (ATA) to end segregation and racial discrimination in various public and private spaces in Little Rock and school districts across the State of Arkansas.

The Arkansas Teachers Association Headquarters Building and the Professional Services Building are located along the northern side of Wright Avenue, between Pulaski Street and Dr. Martin Luther King Drive. The Arkansas Teachers Association Headquarters Building and the Professional Services Building were both designed by the architectural firm of George Henry Tschiemer & Associates of Pine Bluff, Arkansas, in the early 1960s. Both buildings were constructed by the Smith Brothers Contractors of North Little Rock, Arkansas, and completed by 1965. The two lots along Wright Avenue were originally purchased from the Little Rock School District in early 1961 and the design of the two buildings followed in 1961 and 1962.

### **Arkansas Teachers Association (ATA) Headquarters Building**

The Arkansas Teachers Association grew out of an organization known as the State Teachers Association of Arkansas that was formed in 1898 by a small group of African-American teachers

AR Teachers Association Headquarters Building  
and Professional Services Building

Pulaski, Arkansas

Name of Property

County and State

in Pine Bluff, Arkansas.<sup>1</sup> This small group, including the association's first president, Joseph Carter Corbin, "wanted to increase the value of black children's education, ensure better health for the black community, improve school buildings and equipment, and provide better preparation for teachers."<sup>2</sup> Joseph Corbin was a prominent journalist and the founder and president of the first African-American institution of higher education in Arkansas, Branch Normal College of the Arkansas Industrial University now known as the University of Arkansas at Pine Bluff.<sup>3</sup> The organization changed its name to the Association of Teachers of Negro Youth in Arkansas in 1931, and then the Arkansas Teachers Association in 1938.<sup>4</sup> In the early decades of the 20<sup>th</sup> century, the association focused its efforts on literacy courses for adults, general health education, and helping schools attain accreditation.

The history of a dedicated practice of African-American education in Little Rock began during the Union occupation of the city during the Civil War.<sup>5</sup> Former slaves Charlotte Andrews Stephens and her father William Wallace Andrews were essential in the effort to establish a Methodist Episcopal church and school for local African-American children in the years following the Civil War.<sup>6</sup> The Andrews family established the Wesley Chapel Methodist Church and started a local school that was soon taken over by the American Missionaries Association.<sup>7</sup> After another local school was started for local African-Americans by the Society of Friends (Quakers) and the Freedmen's Bureau, the city of Little Rock also started organizing its own public school system and eventually purchased the Quakers school.<sup>8</sup> Charlotte Stephens had started her teaching career with the Society of Friends (Quakers) at the age of fifteen in 1869.<sup>9</sup> She was then hired as the first African-American teacher in the newly created city school district. She would eventually teach in the district for seventy consecutive years. Her career would span from the earliest years of reconstruction in the South through the early history of the civil rights movement. Charlotte Stephens passed away in December of 1951.

---

<sup>1</sup> Thomas E. Patterson, *History of the Arkansas Teachers Association*, Washington, D.C.: National Education Association, 1981. pp 21-35.

<sup>2</sup> Denise Malan, "Arkansas Teachers Association (ATA)," *The Encyclopedia of Arkansas History and Culture*, Central Arkansas Library System, 20 July 2007, [www.encyclopediaofarkansas.net](http://www.encyclopediaofarkansas.net).

<sup>3</sup> Izola Preston, "Joseph Carter Corbin (1833-1911)," *The Encyclopedia of Arkansas History and Culture*, Central Arkansas Library System, 16 March 2017, [www.encyclopediaofarkansas.net](http://www.encyclopediaofarkansas.net).

<sup>4</sup> Malan, "Arkansas Teachers Association (ATA)," *The Encyclopedia of Arkansas History and Culture*.

<sup>5</sup> Sondra Gordy, "Charlotte Andrews (Lottie) Stephens (1854-1951)," *Encyclopedia of Arkansas History and Culture*, Central Arkansas Library System, 7 August 2015, [www.encyclopediaofarkansas.net](http://www.encyclopediaofarkansas.net).

<sup>6</sup> *Ibid.*

<sup>7</sup> *Ibid.*

<sup>8</sup> *Ibid.*

<sup>9</sup> *Ibid.*

AR Teachers Association Headquarters Building  
and Professional Services Building

Pulaski, Arkansas

Name of Property

County and State

Although membership in the Arkansas Teachers Association declined during the Great Depression, the association continued to work with various national African-American education organizations to lobby for better conditions for teachers and students. During the 1950s and 1960s, the ATA focused its efforts on obtaining equal salaries for African-American teachers and equal facilities and supplies for students.<sup>10</sup> Also, after the *Brown vs. Board of Education of Topeka, Kansas* decision in 1954, the ATA worked to protect black teachers from being fired during the integration process.<sup>11</sup> During the 1960s, the membership of the ATA increased and the association continued to work with national organizations to fight for equality in and outside the classroom from its newly completed headquarters building in Little Rock, Arkansas.

A purpose-built headquarters building for the Arkansas Teachers Association had long been a hope of the organization's leaders.<sup>12</sup> Many in the association thought that a central office would help serve as a focal point for association activities and as a location that could support full-time staff members.<sup>13</sup> In the late 1920s, the position of executive secretary as an officer of the Association was established.<sup>14</sup> The position, as well as all other positions on the Arkansas Teachers Association Board, was not a paid position and members of the Association's board and staff most often worked out of their own homes or the schools where they were employed. By the 1950s, the secretary had become responsible for editing the newsletter of the association, was the chairman for the program committee, was responsible for conducting all of the elections associated with the association, and was mandated to file detailed reports of their activities for the governing board members.<sup>15</sup>

In campaigns by those running for Arkansas Teachers Association President, the need for a headquarters or central office was mentioned as early as the 1930s. It wasn't until July of 1950, however, under the leadership of President John H. White, that the ATA opened an official office and hired its first full-time, paid, executive secretary, added other staff and purchased office supplies and furnishings.<sup>16</sup> This first office was located in a two room space at 820 ½ Chester Street in the J. B. Curry Real Estate Building.<sup>17</sup> This office was soon outgrown and a four-room apartment was leased in the J. W. Claiborne Building at 923 ½ West Ninth Street in 1953.<sup>18</sup> This put the ATA offices in the heart of the African-American business district in downtown Little

<sup>10</sup> Malan, "Arkansas Teachers Association (ATA)," *The Encyclopedia of Arkansas History and Culture*.

<sup>11</sup> *Ibid.*

<sup>12</sup> Patterson, *History of the Arkansas Teachers Association*, p 159.

<sup>13</sup> Patterson, *History of the Arkansas Teachers Association*, p 159.

<sup>14</sup> *Ibid.*

<sup>15</sup> Patterson, *History of the Arkansas Teachers Association*, p 160.

<sup>16</sup> Patterson, *History of the Arkansas Teachers Association*, p 161.

<sup>17</sup> *Ibid.*

<sup>18</sup> *Ibid.*

AR Teachers Association Headquarters Building  
and Professional Services Building

Pulaski, Arkansas

Name of Property

County and State

Rock. The office was again moved to an office at 924 Ringo Street in the Prince Hall Masonic Lodge, where it remained until the new headquarters building was completed in 1965.<sup>19</sup>

In 1960, ATA President Elija Coleman directed the association to focus on the construction of a new, purpose-built headquarters building. He helped to raise funds for the new building by increasing individual dues from \$6 to \$10, of which \$1.50 was to be directed toward the new construction project.<sup>20</sup> At the end of his term as President of the ATA, Coleman was appointed to head the new building committee, a post he held until the completion of the new building in 1965. The land for the new building had been purchased in 1961 from the Little Rock School Board, under the direction of then President Vivian T. Hegwood.<sup>21</sup> A Sanborn Fire Insurance Map of the area from 1939 indicates a set of small, one-story classroom buildings along West 18<sup>th</sup> street to the North of the current ATA headquarters building. These may have been used by the local school district as a small neighborhood school.

President Nexton P. Marshall, who was elected to head the ATA in the fall of 1962, increased the individual membership dues an additional \$5 in order to ensure that funds for the planned new headquarters building would be available.<sup>22</sup> This new building was budgeted to cost \$67,000.<sup>23</sup> The discussions of the design, loan negotiations, and groundbreaking ceremony were all held under the leadership of president Marshall.<sup>24</sup> A ground breaking ceremony was held for the new headquarters building on May 6, 1964.<sup>25</sup>

The new ATA Headquarters building was designed by Pine Bluff, Arkansas, architect George Henry Tschiemer, Jr..<sup>26</sup> He also designed the Professional Services Building on the adjacent lot to the west at the same time. Tschiemer was a native of Little Rock, Arkansas, where he was born on April 14, 1922.<sup>27</sup> He graduated from Little Rock High School in 1940. After graduating from Little Rock Junior College in 1942, Tschiemer enlisted in the United States Army where he

<sup>19</sup> Patterson, *History of the Arkansas Teachers Association*, p 162.

<sup>20</sup> Patterson, *History of the Arkansas Teachers Association*, p 171.

<sup>21</sup> The purchase price for the property is recorded in Patterson's book on the history of the ATA as \$10,800.00; however, he inaccurately records the date of sale as 1962. It was actually May 26, 1961 as evidenced by the filed Warranty Deed in Book 763, Page 437, in the Pulaski County Real Estate Records.

<sup>22</sup> Patterson, *History of the Arkansas Teachers Association*, p 172.

<sup>23</sup> *Ibid.*

<sup>24</sup> *Ibid.*

<sup>25</sup> Patterson, *History of the Arkansas Teachers Association*, pp 168-169.

<sup>26</sup> This is recorded on the plaque on the ATA Headquarters Building and in the entry for George H. Tschiemer in the following directory: John F. Gane, *American Architects Directory, 3rd Edition.*, New York: R. R. Bowker Company, 1970.

<sup>27</sup> "George Henry Tschiemer," Obituary, Roller Funeral Homes, [www.rollerfuneralhomes.com](http://www.rollerfuneralhomes.com), August 2005.

AR Teachers Association Headquarters Building  
and Professional Services Building

Pulaski, Arkansas

Name of Property

County and State

served as a military engineer from 1943 until 1945, serving in Europe and earning the rank of Sargent. After his military service, he studied architecture at Oklahoma A&M (now Oklahoma State University) in Stillwater, Oklahoma, graduating with a Bachelors of Architecture in 1950.<sup>28</sup> He spent most of his professional life as a civilian architect for the Pine Bluff Arsenal. He also organized his own private architectural firm in Pine Bluff in 1952. He then joined the American Institute of Architects in 1953. During the 1960s and 1970s, George Tschiemer practiced under the firm name George H. Tschiemer & Associates in Pine Bluff, Arkansas, with offices on South Cedar Street.<sup>29</sup> He designed several projects in Pine Bluff, including the Pine Bluff Nursing Home in 1966, The Credit Union Headquarters and Office Building in 1968 and the Grace Episcopal Church classroom building in 1969.<sup>30</sup> Most of his projects were designed in the contemporary Modern aesthetic, with simple, unornamented walls, exposed structural systems, ribbon windows and period typical metal and glass windows and doors. George Tschiemer, Jr., passed away in North Little Rock, Arkansas, in 2005.<sup>31</sup>

The ATA Headquarters was built by Smith Brothers General Contractors; an African-American owned and operated business based in North Little Rock.<sup>32</sup> The Smith Brothers General Contractors was founded by John W. Smith and Joseph T. Smith in September of 1952.<sup>33</sup> The firm specialized in brick masonry projects and worked on projects across Central Arkansas. In 1958, the Smith Brothers firm is thought to have become the first minority business to obtain a General Contracting license in the State of Arkansas. Under this new license, John and Joseph Smith restructured their previous business partnership and officially adopted the name Smith Brothers General Contractors. They soon set to work on two large church projects, Mt. Olive Baptist Church of Little Rock and Bethel African Methodist Episcopal Church of North Little Rock. They also constructed several homes for African-American families in the University Park Subdivision in Little Rock. During the 1970s and 1980s, the partnership continued to flourish, with Joseph becoming a Real Estate Broker and establishing a separate real estate company.<sup>34</sup> By 1990, Smith Brothers General Contractors, in partnership with other minority owned businesses, was able to complete large scale contracts for the Little Rock Air Force Base. John and Joseph Smith were also very active in the civic landscape of central Arkansas. Joseph Smith was appointed to the Urban Renewal Advisory Committee in North Little Rock in 1961

<sup>28</sup> John F. Gane, *American Architects Directory, 3rd Edition.*, New York: R. R. Bowker Company, 1970.

<sup>29</sup> *Ibid.*

<sup>30</sup> *Ibid.*

<sup>31</sup> "George Henry Tschiemer," Obituary, Roller Funeral Homes, [www.rollerfuneralhomes.com](http://www.rollerfuneralhomes.com), August 2005.

<sup>32</sup> This is recorded on the plaque on the ATA Headquarters Building.

<sup>33</sup> Angela Williamson, "Profile of Smith Brothers General Contractors," provided by the Smith Family, Files of the Arkansas Historic Preservation Program, Little Rock, Arkansas.

<sup>34</sup> The Smith Brothers Realty Company was also housed in the Professional Services Building in 1980, as shown in listings for the address in the Little Rock City Directory for that year.

AR Teachers Association Headquarters Building  
and Professional Services Building

Pulaski, Arkansas

Name of Property

County and State

while John Smith was appointed to serve on the Selective Service Board in 1962.<sup>35</sup> John was also appointed to the North Little Rock Planning Commission in 1965 and became the first African-American person elected to serve on the North Little Rock School Board in 1968.<sup>36</sup> The firm that Joseph and John started in 1952 worked on various residential, commercial, governmental, educational and ecclesiastical projects throughout the second half of the 20<sup>th</sup> century. The firm was finally dissolved in 2003 due to the death of one of the partners.<sup>37</sup>

Completion of the ATA headquarters building on Wright Avenue was accomplished mainly under the supervision of ATA Executive Secretary Thomas E. Patterson.<sup>38</sup> Patterson had been a former teacher, principal, superintendent, local association president and board member of ATA.<sup>39</sup> He would serve as the executive secretary of the ATA under four presidents; Nexton P. Marshall, Edwin L. Hawkins, Walter L. Littlejohn, and York W. Williams. The completed ATA Headquarters Building was dedicated on April 11<sup>th</sup>, 1965 at a ceremony supervised by Patterson with current ATA President Edwin L. Hawkins presiding.<sup>40</sup>

After the completion of the ATA Headquarters building at 1306 Wright Avenue, the space soon became an important meeting place and social center of the African-American educational community. It was also used as a meeting place for various outside organizations, including the Leadership Roundtable, the Arkansas Council for Human Relations, and many others. The Leadership Roundtable of Little Rock would also be an active force in local civil rights actions for decades and would use the ATA Headquarters Building spaces for meetings during the 1960s.<sup>41</sup> The building was also offered for community use, with spaces that could be rented out for weddings and anniversary receptions, meetings and social events.<sup>42</sup>

Patterson would lead the ATA until its merger with the formerly all-white Arkansas Education Association in 1969.<sup>43</sup> The ATA Headquarters building would later also serve as the campaign headquarters for Patterson during his successful run for election in 1967 to the Little Rock school board as the first African-American member.<sup>44</sup> Patterson's staff at the ATA also included Annie McDaniel Abrams, a long-time employee and former teacher from Lee County. Local educator

---

<sup>35</sup> Williamson, "Profile of Smith Brothers General Contractors," Files of the Arkansas Historic Preservation Program.

<sup>36</sup> *Ibid.*

<sup>37</sup> *Ibid.*

<sup>38</sup> Patterson, *History of the Arkansas Teachers Association*, p 166.

<sup>39</sup> Patterson, *History of the Arkansas Teachers Association*, pp 166-167.

<sup>40</sup> Patterson, *History of the Arkansas Teachers Association*, p 172.

<sup>41</sup> *Ibid.*

<sup>42</sup> *Ibid.*

<sup>43</sup> Patterson, *History of the Arkansas Teachers Association*, p 170.

<sup>44</sup> Patterson, *History of the Arkansas Teachers Association*, p 169.

AR Teachers Association Headquarters Building  
and Professional Services Building

Pulaski, Arkansas

Name of Property

County and State

and community activist Annie M. Abrams returned to Little Rock in 1956 to work for the ATA after teaching in Marianna in a segregated elementary school.<sup>45</sup> Abrams would become a leader in the effort to desegregate Central High School in 1957 and was involved in the state Democratic Party and the leadership of the Young Women's Christian Association (YWCA).<sup>46</sup> Abrams worked for the ATA for five years as an office manager and assistant editor of the organizations publication, the *Bulletin*, and convention coordinator before the merger with the Arkansas Education Association (AEA). She would continue to work for the AEA after the merger in 1969 as an executive assistant.<sup>47</sup>

One of the major battles that the ATA fought during the late 1960s, after moving to their new headquarters building, was the fight against displacement of African-American teachers during the integration process of many Arkansas schools.<sup>48</sup> When school districts across Arkansas were forced to integrate in the 1960s, most simply consolidated the African-American students into existing white schools and then dismissed the African-American teachers who were no longer needed for separate instruction.<sup>49</sup> Also, when African-American teachers were retained in districts, they were often only given short term contracts.<sup>50</sup> The ATA worked with funding from the National Education Association and the NAACP Legal Defense Fund to hire attorney John W. Walker to fight the efforts of various school districts to dismiss teachers.<sup>51</sup> An early case, in which ATA was a participant, was *Smith v. Board of Education of Morrilton School District No. 32*. This suit was brought against the Morrilton School District in 1965 after the local colored school was closed due to the number of students who had selected to attend the recently desegregated city high school.<sup>52</sup> The colored school's teachers were summarily dismissed without any attempt to find them jobs at other schools within the school district. After an initial loss and appeal, the case was eventually decided in favor of the ATA and the suing teachers, with the Morrilton School District forced to either rehire or pay damages to the fired teachers.

---

<sup>45</sup> Kyle L. Jones, "Annie Mable McDaniel Abrams (1931-)," *The Encyclopedia of Arkansas History and Culture*, Central Arkansas Library System, 19 June 2015, [www.encyclopediaofarkansas.net](http://www.encyclopediaofarkansas.net).

<sup>46</sup> *Ibid.*

<sup>47</sup> *Ibid.*

<sup>48</sup> Patterson, *History of the Arkansas Teachers Association*, pp 149-155.

<sup>49</sup> Patterson, *History of the Arkansas Teachers Association*, p 154.

<sup>50</sup> *Ibid.*

<sup>51</sup> Patterson, *History of the Arkansas Teachers Association*, p 156.

<sup>52</sup> The Morrilton Colored School, known as L. W. Sullivan High School was listed in the National Register of Historic Places on 23 May 2014 and was delisted after the structure was destroyed by fire in September of 2015. More information on the court case and the school itself can be found in the files of the Arkansas Historic Preservation Program, Little Rock, Arkansas. Patterson, *History of the Arkansas Teachers Association*, p 156.

AR Teachers Association Headquarters Building  
and Professional Services Building

Pulaski, Arkansas

Name of Property

County and State

The case became national news and eventually became a precedent in later cases across Arkansas where teachers had been dismissed during the integration process.<sup>53</sup>

After the merger with the AEA in 1969, a board of former ATA member was formed to decide the fate of the building.<sup>54</sup> It was decided that the building should be sold in the near future and the monies raised would be used to create an endowment for a scholarship program. The building was used as office space for the Arkansas Education Association staff until 1971, when it was sold to the group of African-American doctors who owned the property and professional office building directly to the east.<sup>55</sup> This brought both buildings and lots back under single ownership. These two properties have continued to be under single ownership, with the property purchased by the current owner, Mr. Arlen Jones, in 2001.<sup>56</sup>

### **The Professional Services Building and the Council on Community Affairs (COCA)**

The Council on Community Affairs was initially founded in 1961 by a group of four African-American medical professionals; Dr. William H. Townsend, Dr. Morris A. Jackson, Dr. Garman P. Freeman, and Dr. Evangeline Upshur.<sup>57</sup> The four medical professionals had recently formed a joint practice with offices on West 9<sup>th</sup> Street in the heart of the African-American business district in downtown Little Rock. In 1961, these four doctors created a corporation known as Professional Services, Inc. with Dr. William Townsend serving as the President of the Corporation.<sup>58</sup>

Dr. William H. Townsend was a native of West Point, Mississippi; he, however, grew up in Earle, Arkansas.<sup>59</sup> After serving in World War II, Townsend attended the Tuskegee Institute in

---

<sup>53</sup> Ralph Wilcox, Morrilton Colored School National Register Nomination, Files of the Arkansas Historic Preservation Program, Little Rock, Arkansas. Patterson, *History of the Arkansas Teachers Association*, p 156.

<sup>54</sup> Patterson, *History of the Arkansas Teachers Association*, p 173.

<sup>55</sup> *Ibid.*

<sup>56</sup> Warranty Deed, Pulaski County Clerk, Professional Services, Inc. to Arlen F. Jones, 12 September 2001, stamped number 200638.

<sup>57</sup> The name of Dr. Jackson is sometimes noted as Dr. Maurice Jackson. His name was actually Morris Jackson, as noted in contemporary accounts and in awards bestowed by the Arkansas Civil Rights Heritage Trail. John A. Kirk, "Council on Community Affairs (COCA)," *The Encyclopedia of Arkansas History and Culture*, Central Arkansas Library System, 11 March 2014, [www.encyclopediaofarkansas.net](http://www.encyclopediaofarkansas.net).

<sup>58</sup> Arkansas Secretary of State, "Search of Incorporations, Cooperatives, Banks and Insurance Companies," Professional Services, Inc. Filed 22 May 1961, President W. H. Townsend, Agent Garman P. Freeman, D.D.S., filing #100041813.

<sup>59</sup> "Dr. William H. Townsend, Council on Community Affairs," 2013 Honorees: Desegregation of Downtown Little Rock, Arkansas Civil Rights Heritage Trail. [www.arkansascivilrightsheritage.org](http://www.arkansascivilrightsheritage.org).

AR Teachers Association Headquarters Building  
and Professional Services Building

Pulaski, Arkansas

Name of Property

County and State

Alabama where he earned his bachelor's degree in agriculture. He then attended the Northern Illinois College of Optometry and graduated in 1950. He soon became the first African-American to be granted a license to practice optometry in Arkansas.<sup>60</sup> In 1972, he was one of the first African-Americans to be elected to the State House of Representatives since the 1890s.<sup>61</sup> Dr. Morris A. Jackson was born and raised in Little Rock, Arkansas, where he attended Philander Smith College.<sup>62</sup> In 1954, Dr. Jackson became only the second African-American to earn a doctorate of medicine from the medical school of the University of Arkansas, now known as UAMS, after Dr. Edith Irby Jones in 1952.<sup>63</sup> He was also the first African-American to run for a spot on the city's school board in 1959; however, he was forced to abandon his candidacy due to safety concerns at the urging of other community leaders.<sup>64</sup> Dr. Garman P. Freeman was born in Fargo, Arkansas, and after graduating from dental school in 1949 married fellow classman Dr. Evangeline Upshur of Tidewater, Virginia.<sup>65</sup> Dr. Freeman was also a key figure in the desegregation crisis at Little Rock Central High School in 1957. He, along with other African-American supporters, served as a guard to his neighbors Daisy and L.C. Bates during the crisis.<sup>66</sup> Dr. Upshur was the only woman in her class at Meharry Medical College's School of Dentistry and moved with her husband to Little Rock to start a new dentistry practice in the 1950s.<sup>67</sup>

The inspiration for the new community activism group, known as the Council on Community Affairs (COCA), was initiated by the dismay that this group of medical professionals felt after the recent sit-in protests by groups of students from Philander Smith College and visits by Freedom Riders failed to gain any meaningful progress in desegregation in the city.<sup>68</sup> This group of professional African-American men and women wanted to create an organization that would focus on unifying individuals and groups in the fight for equal rights. The group was initially started in the offices of these medical professionals on West 9<sup>th</sup> Street. After their new office

---

<sup>60</sup> *Ibid.*

<sup>61</sup> *Ibid.*

<sup>62</sup> Refer to note 51. "Dr. Morris A. Jackson, Council on Community Affairs," 2013 Honorees: Desegregation of Downtown Little Rock, Arkansas Civil Rights Heritage Trail, [www.arkansascivilrightsheritage.org](http://www.arkansascivilrightsheritage.org).

<sup>63</sup> Charlie H. Epps, Jr., et al, "Medical History: Black Medical Pioneers: African-American 'Firsts' in Academic and Organized Medicine Part One," *Journal of the National Medical Association*, vol. 85, no. 8. p 632.

<sup>64</sup> John A. Kirk, *Redefining the Color Line: Black Activism in Little Rock, Arkansas, 1940-1970*, Gainesville, FL: University Press of Florida, 2002. p 151.

<sup>65</sup> "Dr. Garman P. Freeman, Council on Community Affairs," 2013 Honorees: Desegregation of Downtown Little Rock, Arkansas Civil Rights Heritage Trail, [www.arkansascivilrightsheritage.org](http://www.arkansascivilrightsheritage.org).

<sup>66</sup> Kirk, *Redefining the Color Line: Black Activism in Little Rock, Arkansas, 1940-1970*, pp 151-152.

<sup>67</sup> "Evangeline Upshur, Council on Community Affairs," 2013 Honorees: Desegregation of Downtown Little Rock, Arkansas Civil Rights Heritage Trail, [www.arkansascivilrightsheritage.org](http://www.arkansascivilrightsheritage.org).

<sup>68</sup> Kirk, "Council on Community Affairs (COCA)," *The Encyclopedia of Arkansas History and Culture*.

AR Teachers Association Headquarters Building  
and Professional Services Building

Pulaski, Arkansas

Name of Property

County and State

spaces were finished, the new building also became the new headquarters for COCA and the many discussions and negotiations that COCA would arrange and direct in their effort to end segregation in Little Rock. Also, in the early 1960s, Ozell Sutton joined COCA and became a driving force in the group as the director of public relations.<sup>69</sup> Sutton had been raised in Little Rock and was a graduate of Philander Smith College. In 1948, he became the first African-American reporter hired by the *Arkansas Democrat* newspaper. In 1957 he took a job at Winthrop Rockefeller's cattle ranch at Petit Jean Mountain. During the 1960s, Sutton helped to direct the path that COCA would follow in order to fight segregation in businesses and public spaces in downtown Little Rock.<sup>70</sup>

During the 1960s, COCA's main objective was to work with the many other local civil rights groups to try to create an umbrella of groups that could more easily organize their respective memberships in the fight to end segregation in the city. One of the group's main goals in 1961 was to improve communication between the white and African-American communities of Little Rock and push for the peaceful integration of public facilities. This initial effort eventually failed and in 1962 COCA filed a lawsuit against the city to force integration of public spaces and recreational facilities.<sup>71</sup> COCA also worked with other organizations to help bring an end to segregation in downtown retail businesses with a negotiated phased plan of desegregation that started in January of 1963.<sup>72</sup> Also in 1963, the group's lawsuit against the city was successful and by the end of the year many public spaces and businesses were desegregated without violence. In April of 1963, as the Professional Services Building was under construction, *JET* magazine profiled the city of Little Rock and the progress towards desegregation five years after the Central High Crisis.<sup>73</sup> One of the main features of this profile was a description of the new medical building and the group of young professionals who had established themselves as important leaders in the local African-American community:

Dr. William Townsend and Dr. Morris Jackson stirred unity ("that's the greatest thing that happened to us since 1957," said Townsend) in the Negro community, and both apply logic and reason to interracial councils. This pair, plus Dr. Evangeline Upshur and Dr. Garland (sic) P. Freeman, are using \$150,000 to build a medical center, under construction by the only Negro licensed general

<sup>69</sup> Brent E. Riffell, "Ozell Sutton (1925 - 2015)," *The Encyclopedia of Arkansas History and Culture*, Central Arkansas Library System, 30 June 2017, [www.encyclopediaofarkansas.net](http://www.encyclopediaofarkansas.net).

<sup>70</sup> Kirk, *Redefining the Color Line: Black Activism in Little Rock, Arkansas, 1940-1970*, p 152.

<sup>71</sup> Kirk, "Council on Community Affairs (COCA)," *The Encyclopedia of Arkansas History and Culture*.

<sup>72</sup> *Ibid.*

<sup>73</sup> John Britton, "New Little Rock: Five Years After U.S. Troops Left," *JET*, vol. 23, no. 24, 4 April 1963. pp. 14-19.

AR Teachers Association Headquarters Building  
and Professional Services Building

Pulaski, Arkansas

Name of Property

County and State

contractor in the state, John W. Smith. They're building the self-help image, and, thus, are powerful opinion leaders.<sup>74</sup>

By the end of 1963, most of the public spaces and many of the private facilities and businesses in Little Rock had been desegregated, thanks in part to the efforts of COCA to help coordinate the various organizations within the African-American community. After these victories, COCA, in cooperation with many other local and national organizations, continued to fight for full desegregation in and around Little Rock throughout the 1960s.

Throughout the 1960s, the COCA was active in many of the area's important civil rights actions. After 1970, the group's members would eventually take on different roles in other organizations and mentions of the group gradually disappeared. COCA's leaders continued to serve as leaders in other organizations, including the Arkansas Voter Project (AVP) which worked to mobilize African-American voters across the state during the late 1960s.<sup>75</sup> The founding members of COCA went on to other important roles in the African-American community, including Dr. Townsend who served in the State House of Representatives. COCA served an important role in the civil rights movement in Little Rock during the 1960s, providing leadership during many of the struggles to desegregate the downtown business district and the local school system and serving as an important link between older leaders and new activists in the community.<sup>76</sup>

The group of doctors who founded the Council on Community Affairs (COCA) originally worked out of offices in the Raines Building at 616 ½ West 9<sup>th</sup> Street.<sup>77</sup> This building was in an area that was considered the main African-American business district, southwest of the historic heart of Little Rock around the Old State House. During the 1950s and 1960s, this West 9<sup>th</sup> Street business district began to disappear as a new expressway was cut through the city just to the south. This new expressway, now I-630, cut off the business district's link with long established neighborhoods to the south. By the 1960s, the planning for this new expressway had been in motion for almost a decade and although there were protests and lawsuits targeted at the highway's completion due to its division of the city and demolition of historic neighborhoods, the road's completion seemed to be inevitable.<sup>78</sup> This may have been a large factor in the relocation of the new medical clinic away from their previous offices on West 9<sup>th</sup> Street to Wright Avenue, on an open property to the south of the new expressway and near neighborhoods

<sup>74</sup> *Ibid.*

<sup>75</sup> Kirk, "Council on Community Affairs (COCA)," *The Encyclopedia of Arkansas History and Culture*.

<sup>76</sup> *Ibid.*

<sup>77</sup> Little Rock City Directories, 1962-1963.

<sup>78</sup> Darcy Pumphrey, "An Interstate Runs Through It: The Construction of Little Rock's Interstate 630 and the Fight to Stop It," Thesis Submitted to the Graduate School of University of Arkansas at Little Rock. August 2013.

AR Teachers Association Headquarters Building  
and Professional Services Building

Pulaski, Arkansas

Name of Property

County and State

that were predominately African-American. The new location was also near to Paul Lawrence Dunbar High School, the city's main African-American high school and an anchor for the local community for decades.<sup>79</sup>

The Arkansas Teachers Association Headquarters Building and the Professional Services Building were both designed by the architectural firm of George Henry Tschiemer & Associates of Pine Bluff, Arkansas, in the early 1960s. Both buildings were constructed by the Smith Brothers Contractors of North Little Rock, Arkansas, and completed by 1965. The two lots along Wright Avenue were originally purchased from the Little Rock School District in early 1961 and the design of the two buildings followed in 1961 and 1962.

It appears from surviving records that the four doctors who banded together to form the for profit corporation known as Professional Services, Inc., in early 1961 worked with the Arkansas Teachers Association to design and build two buildings on the newly purchased land; one to accommodate the Association's offices and a larger building directly to the east to accommodate multiple medical offices and a retail pharmacy space. The Professional Services Building was completed in early 1964, with the new medical offices and pharmacy listed in the Little Rock City Directory for 1964. The Arkansas Teachers Association retained ownership of the western half of the property, with Professional Services, Inc., taking ownership of the eastern half. After the merger with the AEA in 1969, a board of former ATA members decided that the building should be sold. The building was used as office space for Arkansas Education Association staff until 1971, when it was sold to the group of African-American doctors who owned the property and professional office building directly to the east.<sup>80</sup> This brought both building and lots back under single ownership.

As evidenced by local city directories, the building at 1304 Wright Avenue continued to be used as doctor's offices from 1964 through at least 2000. The original pharmacy in the building was the B & A Pharmacy, which was owned and operated by Mr. Carl Brooks. This pharmacy was located in the building until 1980, when the pharmacy became Rx-Tag Drugs. Also in 1980, the real estate company of the Smith Brothers, who also owned the general contractor company that constructed both buildings, was located in one of the offices in the building. The original ATA Headquarters Building would be used by The Psychedelic Snipper barber shop for many years, as well as a daycare facility and an employment agency during the 1970s and 1980s.<sup>81</sup> These

<sup>79</sup> Refer to the National Register Nominations for Dunbar Jr. and Sr. High School (NR Listed 8.6.1980) and the Paul Laurence Dunbar School Neighborhood Historic District (NR Listed 9.27.2013) for more information.

<sup>80</sup> *Ibid.*

<sup>81</sup> Little Rock City Directories, 1960-1990.

AR Teachers Association Headquarters Building  
and Professional Services Building

Pulaski, Arkansas

Name of Property

County and State

two properties have continued to be under single ownership, with the property purchased by the current owner, Mr. Arlen Jones, in 2001.<sup>82</sup>

### Statement of Significance

The two buildings designed for the ATA and the medical corporation Professional Services, Inc., were contemporary in style, featuring the mid-century modern aesthetic of simple lines and un-ornamented facades. The interior spaces were multi-functional, serving as offices, conference rooms, medical clinics, dentist offices, optometrist offices and a retail and pharmacy space. While the modern aesthetic was partially a result of the use of new and cost-efficient materials and building techniques; the modern styling of the structures was also a reflection of the forward thinking organizations that commissioned the buildings. The overall cost of the project was over \$150,000 dollars, a huge sum, especially for an African-American financed and constructed project in downtown Little Rock, Arkansas, only five years after the Little Rock Desegregation Crisis.<sup>83</sup> This commercial building project was a large scale investment in the heart of Little Rock by the African-American medical community and local civic and educational leaders in a time of high racial tensions. The buildings were not part of just any construction project, they were a way to establish a physical presence in the community and a headquarters for not just the COCA and the ATA, but a space to organize and lead important fights against segregation and for equal rights for African-Americans in the city of Little Rock and across the entire state of Arkansas.

The Arkansas Teachers Association (ATA) Headquarters Building and the Professional Services Building are being nominated to the National Register of Historic Places under **Criterion A**, with **state wide significance**, for its association with the social and education history of the Civil-Rights movement in Little Rock and the State of Arkansas during the 1960s, especially the efforts of the Council on Community Affairs (COCA) and the Arkansas Teachers Association (ATA) to end segregation in various public and private spaces in Little Rock and school districts across the State of Arkansas.

---

<sup>82</sup> Warranty Deed, Pulaski County Clerk, Professional Services, Inc. to Arlen F. Jones, 12 September 2001, stamped number 200638.

<sup>83</sup> John Britton, "New Little Rock: Five Years After U.S. Troops Left," *JET*, vol. 23, no. 24, 4 April 1963. pp. 14-19.

AR Teachers Association Headquarters Building  
and Professional Services Building  
Name of Property

Pulaski, Arkansas  
County and State

---

## 9. Major Bibliographical References

**Bibliography** (Cite the books, articles, and other sources used in preparing this form.)

Britton, John. "New Little Rock: Five Years After U.S. Troops Left." *JET*. vol. 23, no. 24. 4 April 1963. pp. 14-19.

*Bulletin of the Arkansas Teachers Association*. Little Rock, AR: Arkansas Teachers Association. Arkansas Education Association files. Little Rock, Arkansas.

"Dr. Garman P. Freeman, Council on Community Affairs." 2013 Honorees: Desegregation of Downtown Little Rock. Arkansas Civil Rights Heritage Trail. [www.arkansascivilrightsheritage.org](http://www.arkansascivilrightsheritage.org). Accessed 1 September 2017.

"Dr. Morris A. Jackson, Council on Community Affairs." 2013 Honorees: Desegregation of Downtown Little Rock. Arkansas Civil Rights Heritage Trail. [www.arkansascivilrightsheritage.org](http://www.arkansascivilrightsheritage.org). Accessed 1 September 2017.

"Dr. William H. Townsend, Council on Community Affairs." 2013 Honorees: Desegregation of Downtown Little Rock. Arkansas Civil Rights Heritage Trail. [www.arkansascivilrightsheritage.org](http://www.arkansascivilrightsheritage.org). Accessed 1 September 2017.

Epps, Charlie H., Jr., et al. "Medical History: Black Medical Pioneers: African-American 'Firsts' in Academic and Organized Medicine Part One." *Journal of the National Medical Association*. vol. 85, no. 8. p 632.

"Evangeline Upshur, Council on Community Affairs." 2013 Honorees: Desegregation of Downtown Little Rock. Arkansas Civil Rights Heritage Trail. [www.arkansascivilrightsheritage.org](http://www.arkansascivilrightsheritage.org). Accessed 1 September 2017.

Gane, John F., AIA, ed. *American Architects Directory, 3<sup>rd</sup> Edition*. New York: R. R. Bowker Company, 1970.

"George Henry Tschiemer." Obituary. Roller Funeral Homes. [www.rollerfuneralhomes.com](http://www.rollerfuneralhomes.com). August 2005. Accessed 1 September 2017.

Gordy, Sondra. "Charlotte Andrews (Lottie) Stephens (1854-1951)." *Encyclopedia of Arkansas History and Culture*. Central Arkansas Library System. 7 August 2015. [www.encyclopediaofarkansas.net](http://www.encyclopediaofarkansas.net). Accessed 1 September 2017.

AR Teachers Association Headquarters Building  
and Professional Services Building

Pulaski, Arkansas

Name of Property

County and State

Hale, Joseph A. Interview with Loretta Hendrix. 24 April 2017. Little Rock, Arkansas. Tape  
Recording in the personal files of Loretta Hendrix.

Harris, Finnie, and Sarah Jampole. St. Peter's Rock Baptist Church National Register  
Nomination. Files of the Arkansas Historic Preservation Program. Little Rock,  
Arkansas.

Jones, Kyle L. "Annie Mable McDaniel Abrams (1931-)." *The Encyclopedia of Arkansas  
History and Culture*. Central Arkansas Library System. 19 June 2015.  
[www.encyclopediaofarkansas.net](http://www.encyclopediaofarkansas.net). Accessed 1 September 2017

Kirk, John A. *Beyond Little Rock: The Origins and Legacies of the Central High Crisis*.  
Fayetteville, AR: The University of Arkansas Press. 2007.

Kirk, John A. "Council on Community Affairs (COCA)." *The Encyclopedia of Arkansas  
History and Culture*. Central Arkansas Library System. 11 March 2014.  
[www.encyclopediaofarkansas.net](http://www.encyclopediaofarkansas.net). Accessed 1 September 2017

Kirk, John. "Integration was the answer for downtown Little Rock in 1963." *Arkansas Times*.  
Little Rock, Arkansas. 5 September 2013. [www.arkansastimes.com](http://www.arkansastimes.com) Accessed 1  
September 2017.

Kirk, John A. *Redefining the Color Line: Black Activism in Little Rock, Arkansas, 1940-1970*.  
Gainesville, FL: University Press of Florida. 2002.

Little Rock City Directories. Arkansas Studies Institute. Little Rock, Arkansas. 1960 - 2000.

Malan, Denise. "Arkansas Teachers Association (ATA)." *The Encyclopedia of Arkansas  
History and Culture*. Central Arkansas Library System. 20 July 2007.  
[www.encyclopediaofarkansas.net](http://www.encyclopediaofarkansas.net). Accessed 1 September 2017

Patterson, Thomas E. *History of the Arkansas Teachers Association*. Washington, D.C.:  
National Education Association. 1981.

Pumphrey, Darcy. "An Interstate Runs Through It: The Construction of Little Rock's Interstate  
630 and the Fight to Stop It." Thesis Submitted to the Graduate School of University of  
Arkansas at Little Rock. August 2013.

Preston, Izola. "Joseph Carter Corbin (1833-1911)." *The Encyclopedia of Arkansas History and  
Culture*. Central Arkansas Library System. 16 March 2017.  
[www.encyclopediaofarkansas.net](http://www.encyclopediaofarkansas.net). Accessed 1 September 2017.

AR Teachers Association Headquarters Building  
and Professional Services Building

Pulaski, Arkansas

Name of Property

County and State

Riffell, Brent E. "Ozell Sutton (1925 - 2015)." *The Encyclopedia of Arkansas History and Culture*. Central Arkansas Library System. 30 June 2017.  
[www.encyclopediaofarkansas.net](http://www.encyclopediaofarkansas.net). Accessed 1 September 2017.

Sanborn Fire Insurance Maps. Little Rock, Arkansas. 1939-1950.

Spitzberg, Irving J., Jr.. *Racial Politics in Little Rock: 1954 - 1964*. New York, NY: Garland Publishing, Inc. 1987.

Tollette, Sammie Nell. Interview with Loretta Hendrix. 19 April 2017. Little Rock, Arkansas. Tape Recording in the personal files of Loretta Hendrix.

Thomas E. Patterson Collection. Special Collections. Brown Watson Memorial Library. University of Arkansas at Pine Bluff, Pine Bluff, Arkansas.

Wilcox, Ralph. Morrilton Colored School National Register Nomination. Files of the Arkansas Historic Preservation Program. Little Rock, Arkansas.

Williamson, Angela. "Profile of Smith Brothers General Contractors." provided by the Smith Family. Files of the Arkansas Historic Preservation Program. Little Rock, Arkansas.

Williams, Mary Louise. Interview with Loretta Hendrix. 19 April 2017. Little Rock, Arkansas. Tape Recording in the personal files of Loretta Hendrix.

---

**Previous documentation on file (NPS):**

- preliminary determination of individual listing (36 CFR 67) has been requested
- previously listed in the National Register
- previously determined eligible by the National Register
- designated a National Historic Landmark
- recorded by Historic American Buildings Survey # \_\_\_\_\_
- recorded by Historic American Engineering Record # \_\_\_\_\_
- recorded by Historic American Landscape Survey # \_\_\_\_\_

**Primary location of additional data:**

- State Historic Preservation Office
- Other State agency
- Federal agency
- Local government
- University
- Other

AR Teachers Association Headquarters Building  
and Professional Services Building

Pulaski, Arkansas

Name of Property

County and State

Name of repository: \_\_\_\_\_

**Historic Resources Survey Number (if assigned):** PU6757 & PU6758

---

## 10. Geographical Data

**Acreage of Property** 1.45 acres

Use either the UTM system or latitude/longitude coordinates

### Latitude/Longitude Coordinates

Datum if other than WGS84: \_\_\_\_\_

(enter coordinates to 6 decimal places)

1. Latitude: \_\_\_\_\_ Longitude: \_\_\_\_\_

2. Latitude: \_\_\_\_\_ Longitude: \_\_\_\_\_

3. Latitude: \_\_\_\_\_ Longitude: \_\_\_\_\_

4. Latitude: \_\_\_\_\_ Longitude: \_\_\_\_\_

**Or**

### UTM References

Datum (indicated on USGS map):

NAD 1927 or  NAD 1983

A. Zone: 15 S Easting: 565095.28 Northing: 3843709.36

B. Zone: 15 S Easting: 565088.96 Northing: 3843564.99

C. Zone: 15 S Easting: 565132.77 Northing: 3843563.21

D. Zone: 15 S Easting: 565136.91 Northing: 3843681.41

E. Zone: 15 S Easting: 565116.26 Northing: 3843682.65

F. Zone: 15 S Easting: 565117.40 Northing: 3843709.31

AR Teachers Association Headquarters Building  
and Professional Services Building  
Name of Property

Pulaski, Arkansas  
County and State

**Verbal Boundary Description** (Describe the boundaries of the property.)

Centennial Addition to the city of Little Rock, Block 40, All of lots 31, 32, 33, 34, 35, 38, 39, and 40 and portions of lots 36 and 37. Section 09, Township 01 North, Range 12 West.

**Boundary Justification** (Explain why the boundaries were selected.)

This boundary includes all of the property historically associated with the two buildings at 1304 and 1306 Wright Avenue, Little Rock, Arkansas.

---

**11. Form Prepared By**

name/title: Loretta J Hendrix  
organization: LJH Series, Inc. Little Rock, AR

name/title: Callie Williams, National Register Historian  
organization: Department of Arkansas Heritage, Arkansas Historic Preservation Program  
street & number: 1100 North Street  
city or town: Little Rock state: Arkansas zip code: 72201  
e-mail callie.williams@arkansas.gov  
telephone: 501.324.9789  
date: September 1, 2017

---

**Additional Documentation**

Submit the following items with the completed form:

- **Maps:** A **USGS map** or equivalent (7.5 or 15 minute series) indicating the property's location.
- **Sketch map** for historic districts and properties having large acreage or numerous resources. Key all photographs to this map.
- **Additional items:** (Check with the SHPO, TPO, or FPO for any additional items.)

AR Teachers Association Headquarters Building  
and Professional Services Building  
Name of Property

Pulaski, Arkansas  
County and State

### Photographs

Submit clear and descriptive photographs. The size of each image must be 1600x1200 pixels (minimum), 3000x2000 preferred, at 300 ppi (pixels per inch) or larger. Key all photographs to the sketch map. Each photograph must be numbered and that number must correspond to the photograph number on the photo log. For simplicity, the name of the photographer, photo date, etc. may be listed once on the photograph log and doesn't need to be labeled on every photograph.

### Photo Log

Name of Property: Arkansas Teachers Association Headquarters Building and Professional Services Building

City or Vicinity: Little Rock

County: Pulaski

State: Arkansas

Photographer: Ralph Wilcox and Travis Ratermann

Date Photographed: June 7, 2017

Description of Photograph(s) and number, include description of view indicating direction of camera:

1 of 12: (AR\_PulaskiCounty\_ATAandProfessionalServicesBuildings\_0001)

Detail of the plaque attached near the southernmost entrance to the building on the east façade of the Arkansas Teachers Association Headquarters Building, camera facing south.

2 of 12: (AR\_PulaskiCounty\_ATAandProfessionalServicesBuildings\_0002)

South elevation of the Arkansas Teachers Association Headquarters Building, camera facing northwest.

3 of 12: (AR\_PulaskiCounty\_ATAandProfessionalServicesBuildings\_0003)

East elevation of the Arkansas Teachers Association Headquarters Building, camera facing northwest.

4 of 12: (AR\_PulaskiCounty\_ATAandProfessionalServicesBuildings\_0004)

East elevation of the Arkansas Teachers Association Headquarters Building, camera facing southwest.

AR Teachers Association Headquarters Building  
and Professional Services Building

Pulaski, Arkansas

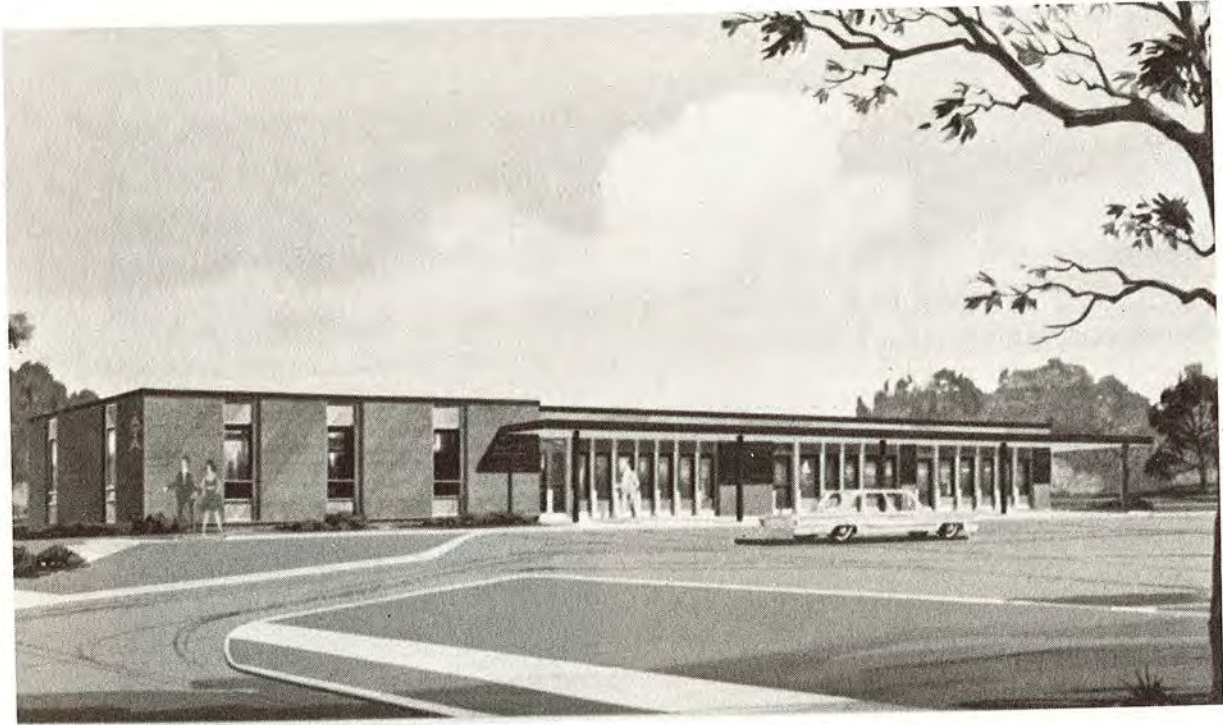
Name of Property

County and State

- 5 of 12: (AR\_PulaskiCounty\_ATAandProfessionalServicesBuildings\_0005)  
North elevation of the Arkansas Teachers Association Headquarters Building, camera facing south.
- 6 of 12: (AR\_PulaskiCounty\_ATAandProfessionalServicesBuildings\_0006)  
West elevation of the Arkansas Teachers Association Headquarters Building, camera facing southwest.
- 7 of 12: (AR\_PulaskiCounty\_ATAandProfessionalServicesBuildings\_0007)  
West elevation of the Professional Services Building, camera facing northeast.
- 8 of 12: (AR\_PulaskiCounty\_ATAandProfessionalServicesBuildings\_0008)  
Detail of the west elevation of the Professional Services Building, camera facing northeast.
- 9 of 12: (AR\_PulaskiCounty\_ATAandProfessionalServicesBuildings\_0009)  
West elevation of the Professional Services Building, camera facing southeast.
- 10 of 12: (AR\_PulaskiCounty\_ATAandProfessionalServicesBuildings\_0010)  
North elevation of the Professional Services Building, camera facing southeast.
- 11 of 12: (AR\_PulaskiCounty\_ATAandProfessionalServicesBuildings\_0011)  
East elevation of the Professional Services Building, camera facing southwest.
- 12 of 12: (AR\_PulaskiCounty\_ATAandProfessionalServicesBuildings\_0012)  
South elevation of the Professional Services Building, camera facing northeast.

AR Teachers Association Headquarters Building  
and Professional Services Building  
Name of Property

Pulaski, Arkansas  
County and State



Architect's Presentation Drawing, Arkansas Teachers Association Headquarters Building,  
Little Rock, Arkansas.

Photo from Thomas E. Patterson's *History of the Arkansas Teachers Association* (Washington,  
D.C.: National Education Association. 1981.). Page 158.

AR Teachers Association Headquarters Building  
and Professional Services Building

Name of Property

Pulaski, Arkansas

County and State



“Dedication ceremonies for the ATA Headquarters building, April 11, 1965”

Photo from Thomas E. Patterson’s *History of the Arkansas Teachers Association* (Washington, D.C.: National Education Association. 1981.). Page 171.

**Paperwork Reduction Act Statement:** This information is being collected for applications to the National Register of Historic Places to nominate properties for listing or determine eligibility for listing, to list properties, and to amend existing listings. Response to this request is required to obtain a benefit in accordance with the National Historic Preservation Act, as amended (16 U.S.C.460 et seq.).

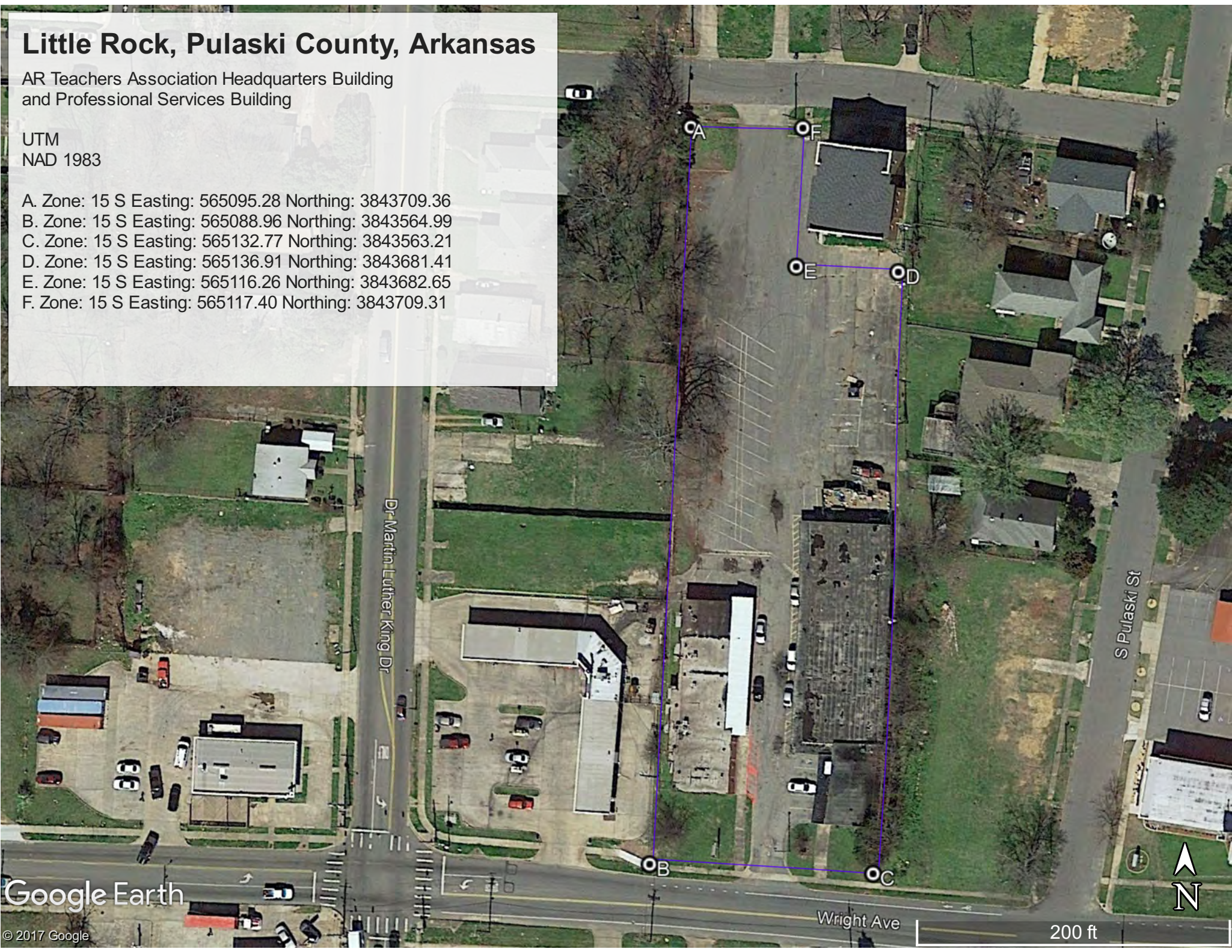
**Estimated Burden Statement:** Public reporting burden for this form is estimated to average 100 hours per response including time for reviewing instructions, gathering and maintaining data, and completing and reviewing the form. Direct comments regarding this burden estimate or any aspect of this form to the Office of Planning and Performance Management, U.S. Dept. of the Interior, 1849 C. Street, NW, Washington, DC.

# Little Rock, Pulaski County, Arkansas

AR Teachers Association Headquarters Building  
and Professional Services Building

UTM  
NAD 1983

- A. Zone: 15 S Easting: 565095.28 Northing: 3843709.36
- B. Zone: 15 S Easting: 565088.96 Northing: 3843564.99
- C. Zone: 15 S Easting: 565132.77 Northing: 3843563.21
- D. Zone: 15 S Easting: 565136.91 Northing: 3843681.41
- E. Zone: 15 S Easting: 565116.26 Northing: 3843682.65
- F. Zone: 15 S Easting: 565117.40 Northing: 3843709.31



Google Earth

© 2017 Google

Wright Ave

200 ft

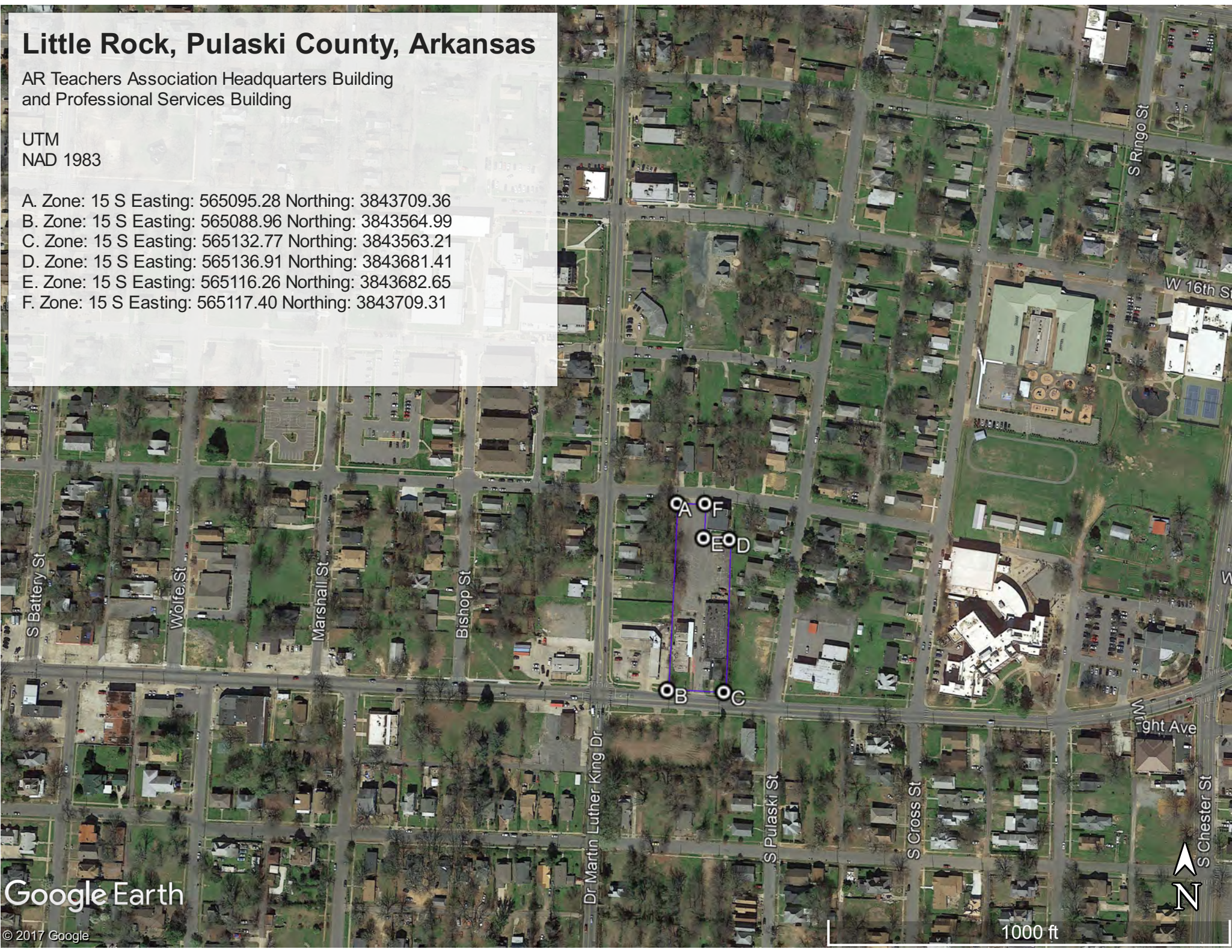


# Little Rock, Pulaski County, Arkansas

AR Teachers Association Headquarters Building  
and Professional Services Building

UTM  
NAD 1983

- A. Zone: 15 S Easting: 565095.28 Northing: 3843709.36
- B. Zone: 15 S Easting: 565088.96 Northing: 3843564.99
- C. Zone: 15 S Easting: 565132.77 Northing: 3843563.21
- D. Zone: 15 S Easting: 565136.91 Northing: 3843681.41
- E. Zone: 15 S Easting: 565116.26 Northing: 3843682.65
- F. Zone: 15 S Easting: 565117.40 Northing: 3843709.31







(AR\_PulaskiCounty\_ATAndProfessionalServicesBuildings\_0001)



(AR\_PulaskiCounty\_ATAndProfessionalServicesBuildings\_0002)



(AR\_PulaskiCounty\_ATAndProfessionalServicesBuildings\_0003)



(AR\_PulaskiCounty\_ATAndProfessionalServicesBuildings\_0004)



(AR\_PulaskiCounty\_ATAndProfessionalServicesBuildings\_0005)



(AR\_PulaskiCounty\_ATAndProfessionalServicesBuildings\_0006)



(AR\_PulaskiCounty\_ATAndProfessionalServicesBuildings\_0007)



(AR\_PulaskiCounty\_ATAndProfessionalServicesBuildings\_0008)



(AR\_PulaskiCounty\_ATAndProfessionalServicesBuildings\_0009)



(AR\_PulaskiCounty\_ATAndProfessionalServicesBuildings\_0010)



(AR\_PulaskiCounty\_ATAandProfessionalServicesBuildings\_0011)



(AR\_PulaskiCounty\_ATAandProfessionalServicesBuildings\_0012)